

**Please supply the artwork as an EPS file**

# artwork guidelines

*Fascia Signs*



Adobe **Illustrator**

- Set up to scale at either 100%, 50%, 25% or 10% (please see resolution requirements)
- Text converted to outlines
- Guides on a separate layer



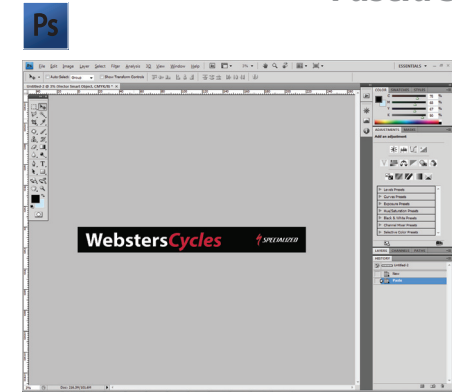
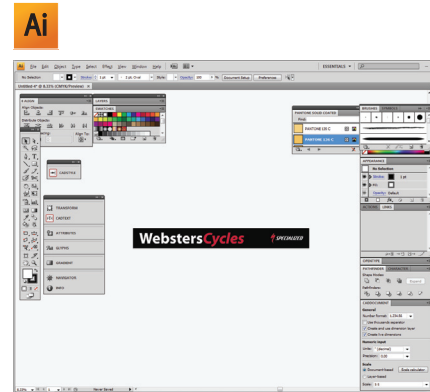
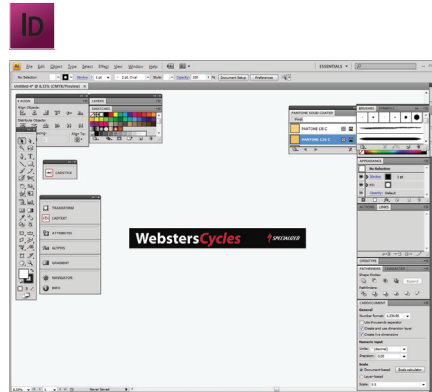
Adobe **Photoshop**

- All elements to be fret cut. They must be supplied as vector graphics in an EPS format.
- Printed elements - Set up to scale at either 100%, 50%, 25% or 10% (please see resolution requirements)
- All images should be CMYK
- All layers flattened



Adobe **InDesign**

- Set up to scale at either 100%, 50%, 25% or 10% (please see resolution requirements)
- Text converted to outlines
- All guides removed/turned off before exporting as an EPS file



Note: Please specify the scale of your artwork on submission and any colour matching references/vinyl references you may require.

## resolution requirements

**100%** - CMYK 100dpi   **50%** - CMYK 200dpi   **25%** - CMYK 300dpi   **10%** - CMYK 1000dpi

**alpha** sign systems

Oakwood Business Park

Oldmixon Crescent

Weston-super-Mare

North Somerset

BS24 9AY

T 01934 625444

F 01934 625358

[giles@alphasignsystems.com](mailto:giles@alphasignsystems.com)

[www.alphasignsystems.com](http://www.alphasignsystems.com)